

# RPA and System Office Update

Angie Bell  
Research and Policy Analysis

Fall 2024 RAC-IRP



# Inside RPA and EDMA



# RPA Personnel

- New RPA graduate assistant,  
Jaden Mikoulinskii, Institute of Higher  
Education at UGA



# IRP Onboarding

- New IR personnel please check out our new onboarding site:  
<https://www.usg.edu/research/onboarding>



# Data Collections and Governance



# Financial Aid Data Collection

- In October 2024 for the 2023-24 aid year (fall 23, spring & summer 24):
  - Adjust maximum award amounts
- Webinar 9/17 to provide guidance, POC responsibilities, and how data is used
  - POCs should be working with you to validate award amounts




# Academic Data Collection

## Summer 2024 Mid-Term

- Ad hoc collection of introductory math and English transfer courses for undergraduates

## Fall 2024 Mid-Term

- Early pull for GSFC data
- Preliminary headcounts 9/4 and 9/26



Thank  
you!

# Academic Data Collection

## Fall 2024 Mid-Term

- Out-of-country tuition classification
  - Institutions can use a code of 'Z' or a code of their choosing in the Institutional Residence Code field. All institutions then must translate their Institutional Residency Code to the Regents Residence Code of 'Z'.

## Fall 2024 End-of-Term

- Nursing interest code
  - Institutions can translate their institutional major, minor, concentration, or program codes to the common ZNUI code

## Spring 2025 Mid-Term

- Addition of SAT validation to ensure if one score is collected all scores are collected.

# Academic Data Collection

## Summer 2025 Mid-Term

- Changes for Post Masters Certificates
  - Modifications to **Degree Level** codes
    - Discontinue F – Advanced Certificate
    - Add H – Post-Baccalaureate Certificate; L-Post-Master's Certificate; R-Post First Professional Certificate
  - New **Student Level** codes
    - 73-Post-Master's and 81-Post-First Professional

**Other: New data governance website**



# DMA Project

- Enhancement of campus <--> USO AA <--> RPA processes-
  - new Academic Program Proposals site through Smartsheet is live.
- Enhancements to APEX underlying database
- Institution data cleanup: 3 schools still in process
- Enhancing DMA public facing tool - live in Nov.
- Creating public academic program search tool for Georgia Degrees Pay- live in Nov.



# Georgia Degrees Pay Program Search Tool

**Select Preferred Delivery Mode**

All
On Campus
Online

**Institution**

All

**Degree Level**

Bachelor's

**Academic Area**

Health Professions And Rel...

[Find a Program Near You!](#)

**Enter Your Zip Code**

30606

**Find a Program within:**





- All Distances
- 5 miles
- 25 miles
- 50 miles
- 100 miles

View Links for Program and Institution Details in Table View!

Table View

Card View

33 Results Notice: There are programs that are located on multiple institution campuses.

Program Name	Institution	Delivery Mode	Campus Location	Mile Zip
<b>Bachelor of Science in Healthcare Services and Informatics Administration</b>		<b>On Campus And Online</b>	<b>Dahlonega, GA</b>	▲
<b>Bachelor of Science in Dental Hygiene</b>		<b>Online</b>	<b>Atlanta, GA</b>	
<b>Bachelor of Science in Nursing</b>		<b>On Campus And Online</b>	<b>Atlanta, GA</b>	
<b>Bachelor of Science in Nursing, RN to BSN</b>		<b>On Campus And Online</b>	<b>Atlanta, GA</b>	
<b>Bachelor of Science in Dental Hygiene</b>		<b>On Campus</b>	<b>Morrow, GA</b>	

UNIVERSITY SYSTEM OF GEORGIA

11

# Web DMA tool for USO and Campuses



## Degrees & Majors Authorized

**Institution Name**: All  **CIP Code**: All   
**Degree Level**: All  **Delivery Mode**: All  **Program Status**: Multiple selections   
**Program Name**: All  **Keyword Search**: Search

View Additional Filters

Reset All Filters

Choose Columns to Display Below  
 All

3,185 Results

Institution Name	Degree/Major Description	Degree Level	Delivery Mode	Degree Acronym	CIP Code	Hours	Effective Da
Abraham Baldwin Agricultural College	Associate in Agricultural and Industrial Equipment Technology	Associate	On Campus	AAIET	01020400		12/25/1899
Abraham Baldwin Agricultural College	Associate in Agriculture in Agricultural Business	Associate	On Campus	AAG	01010200		12/25/1899
Abraham Baldwin Agricultural College	Associate in Agriculture in Agricultural Science	Associate	On Campus	AAG	01000000		1/24/2010
Abraham Baldwin Agricultural College	Associate in Agriculture in Crops	Associate	On Campus	AAG	01030400		5/12/1986
Abraham Baldwin Agricultural College	Associate in Agriculture in Livestock	Associate	On Campus	AAG	01030200		5/12/1986
Abraham Baldwin Agricultural College	Associate in Computer Program/Information Systems Technology	Associate	On Campus	ACST	52120100		5/23/1986
Abraham Baldwin Agricultural College	Associate in Criminal Justice	Associate	On Campus	ACJ	43010700		12/25/1899
Abraham Baldwin Agricultural College	Associate in Forest Technology	Associate	On Campus	AFT	03051100		1/24/2010
Abraham Baldwin Agricultural College	Associate in General Business	Associate	On Campus	AGB	52010100		12/25/1899
Abraham Baldwin Agricultural College	Associate in Home Economics	Associate	On Campus	AHE	19010100		1/24/2010
Abraham Baldwin Agricultural College	Associate in Marketing and Distributive Education	Associate	On Campus	AMDE	52190800		1/24/2010
Abraham Baldwin Agricultural College	Associate in Office Management/Information Process	Associate	On Campus	AOMIP	52040100		12/25/1899
Abraham Baldwin Agricultural College	Associate in Ornamental Horticulture	Associate	On Campus	AOH	01060100		12/25/1899




# Enterprise Data Management and Analytics Update

- Dashboarding
  - Refresh executive dashboards ([strategic plan](#) and operational), prioritize issues, and begin remediation
  - Support Enrollment Monitoring collection and dashboards
  - Support later stages of development of Financials, HR, and DMA dashboards
  - Migrate dashboards from other tools to Power BI, integrate Power BI dashboards into USG Power Service - **ongoing**
  - Develop processes from intake to creation to support - **ongoing**



# EDMA Current and Upcoming Work

- Support and update data collections, including new admissions data collection – **ongoing**
- DMA project – **ongoing**
- Other projects: GA Match, Pathways, OPB and GA AWARDS data submission 
- Adding Multi-Factor Authentication to APEX applications (ADC, external sites, high school codes)
- Power BI Dashboard Series (starts tomorrow!)

# EDMA Current and Upcoming Work

- Onboarding project beginning to provide more consistent campus access to USG data resources
  - Note: is a medium priority project so may have fits and starts
- Hiring two people to provide analytics support for state colleges with anticipated spillover benefits to all schools

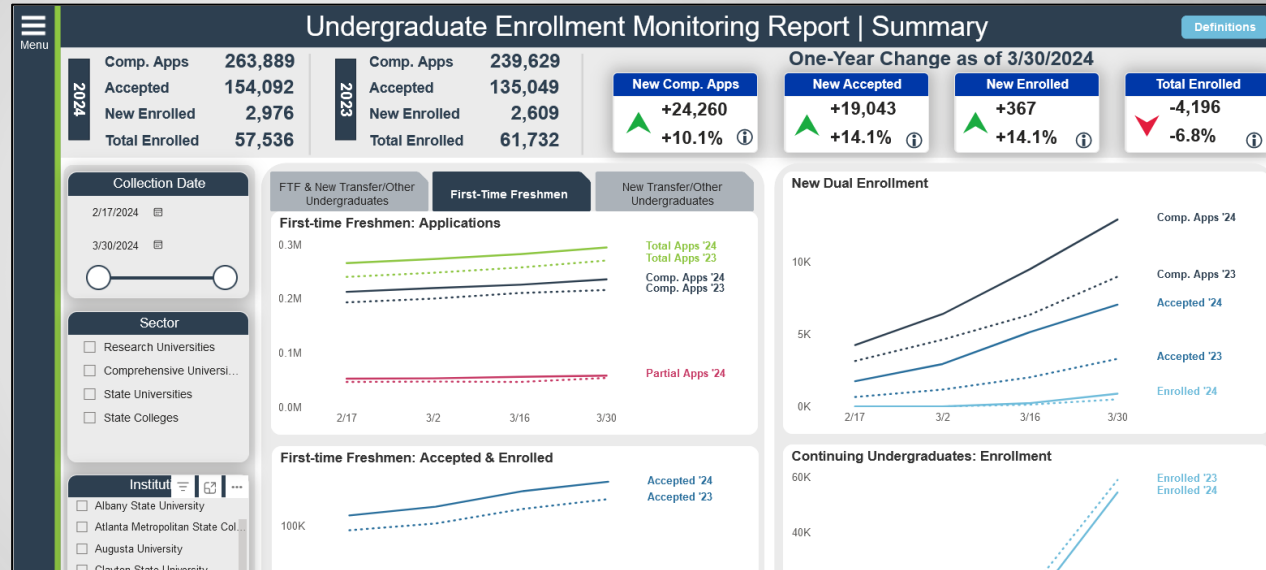


# RPA/EDMA Reporting and Other Projects



# Enrollment Monitoring Reporting

- Fall '24 cycle almost done
- Thank you to those involved
- Working on student-level admissions collection to replace most of EMR



# Data Provision for USG Initiatives, Policy, & Decision Making

- Online course taking outcomes analyses
- Applicant data collection and analysis for destinations for admissions policy – anticipating some further work to monitor
  - Will be requesting applicant file soon (larger like last year, not the small ones for GSFC)
  - Other R1 and R2 institutions going to test optional for Fall 2026
- HOPE and Admissions GPA analysis



# Other Work

- Post-Tenure Review reporting
  - Presentation at November BOR meeting
  - Working through inconsistencies in reporting with institutions
- Data on TCSG transfers to support legislative study
- Georgia Match data work
- Data for Budget Templates

# Financial Value Transparency & Gainful Employment Regulations

- Deadline pushed to 1/15/25 to provide institutions flexibility and resolve system issues
- USO team meeting to adapt approach to supporting campus work
- Banner functionality being released



# Coding Committee & Testing Schools

## Coding Committee

- Jason Wang, Tech
- Duane Day & Jonathan Joe, MGA
- Karen Ruehlman, KSU
- David Connor, UNG
- Tara Roberson & Ben Bond, State

## Testing Schools

- Chris Ferland & Doug Moore, GCSU
- Barrie Fitzgerald & Nijah Bryant, VSU
- Narem Reddy, Clayton
- William Zhang & Howard Shulman, GGC

THANK YOU!!!!



# National Postsecondary Student Aid Study (NPSAS)

- 18 USG schools required to participate
- RPA submitted initial file for all FY2024 enrollees at the 18 schools
- NPSAS sent us list of selected students for whom we need to provide:
  - General Student Information
  - Enrollment
  - Budget/Cost of Attendance
  - Financial Aid

# NPSAS (cont'd)

- RPA will provide most of this data to NPSAS
- **BUT** campuses must provide Budget/Cost of Attendance plus 3 additional data elements (1 from Enrollment and 2 from Financial Aid)
  - RPA will send out templates and specs for the request in early October
  - All data is due back to NPSAS in mid-December

# Qlik Data Viz Portal

- Qlik licenses- [Pearson.Brown@usg.edu](mailto:Pearson.Brown@usg.edu) for changes
  - 2 view only licenses for up to 10 users each, 1 developer
- Transitioning apps to PowerBI and aim to have Qlik portal decommissioned by June 2025



# USG Updates



# Georgia Match

Thank  
you!

- Saw an increase in applicants, admits, and enrolled.

Beginning Freshman Change Fall 2024 over Fall 2023 as of August 17

Partial App from Georgia	Completed App from Georgia	Applicants (Total) from Georgia	Accepted from Georgia	Enrolled from Georgia
2,689	16,630	19,319	11,764	1,289
7.4%	11.2%	10.4%	9.8%	2.7%

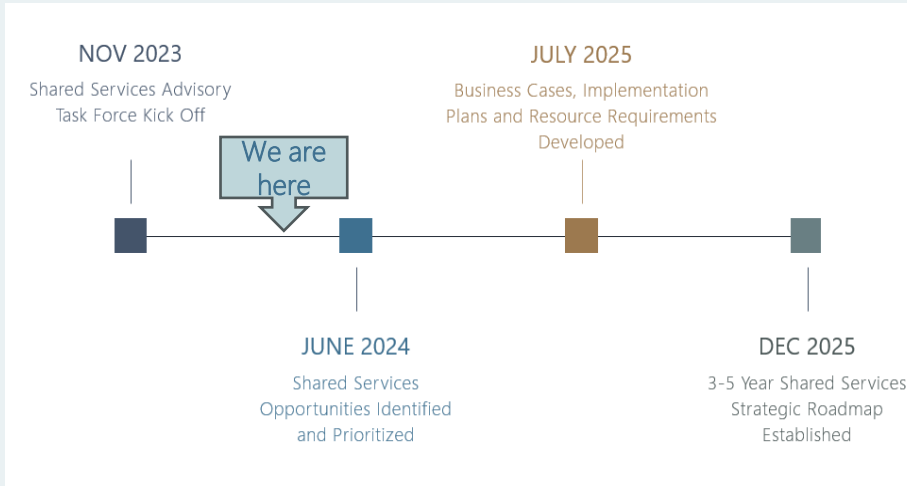
- For 2024-25 high school graduation class:
  - Files from GSFC start 9/28
  - Added data fields including identifiers and HOPE GPA



# Governor's Workforce Strategy Team

- Interagency group with charge of:  
**“Strategically using agreed upon data to inform our work, we will create a clear education-to-workforce system that leads all students and adults into high demand careers in Georgia.”**
- Where Georgia Match began
- Now working on high demand jobs list that guides policy and funding decisions

# SHARED SERVICES ADVISORY TASK FORCE PROGRESS



- Sub-teams are reviewing top three priorities and working to determine:
  - Scope
  - Potential Shared Services Strategy – Centralized vs. Regional
  - Resources – People & Technology
  - Timeline

## Human Resources

- 1 • Dual Appointment
- 2 • TAP
- 3 • Employment Verification
- 3 • Loan Forgiveness

## Business & Finance

- 1 • Payroll Practitioner Expansion
- 2 • Regionalized Finance Operations
- 3 • Accounts Payable
- 3 • Travel & Expense

## Student Services

- 1 • Immunization Records
- 2 • Residency, Lawful Presence and Tuition Classification
- 3 • Student Service Desk/Contact Center/Marketing/Outbound Campaigns



# Questions and Contact

Angela Bell

[Angela.Bell@usg.edu](mailto:Angela.Bell@usg.edu)

Work phone: 404-962-3069

